

IAM SERIES

H7 MODELS

INDEX

105	TECHNICAL DATA
106	DIMENSIONAL DRAWINGS
108	POWER CHARTS
110	SIDE LOAD CHARTS
113	ORDERING INSTRUCTIONS

www.Laheghi.com

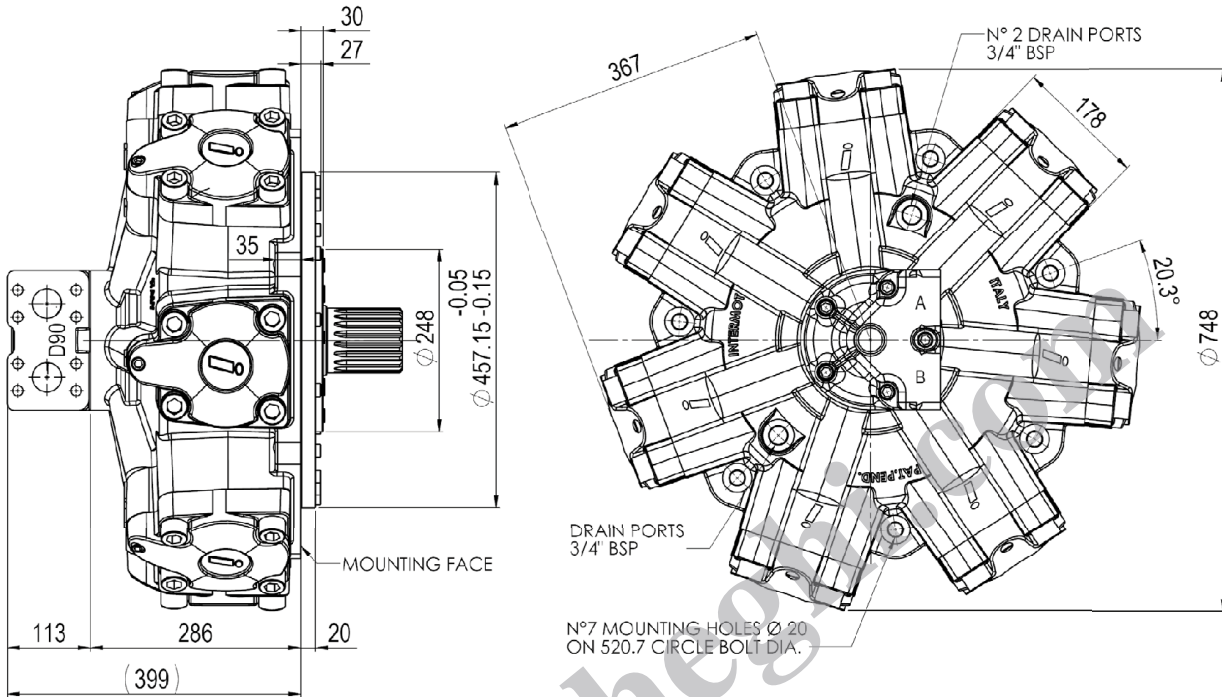
IAM H7 - TECHNICAL DATA

MODEL	N° of pistons	Displacement cc/ rev	Specific Torque Nm/ bar	Pressure			Speed		Max Case Pressure bar	Max Power hp	kW	Dry Weight kg	Inertia moment of rotating parts kg cm ²	
				Max Cont. bar	Max Int. bar	Peak bar	Max Continuous rpm	Peak rpm						
IAM H7	3900	7	3909	62,2	250	300	350	160	200	6	241	180	405	4064
	4300	7	4345	69,2	250	300	350	150	190	6	241	180	405	4064
	4600	7	4618	73,5	250	300	350	140	190	6	241	180	405	4064
	5000	7	5092	81,0	250	300	350	140	180	6	241	180	405	4064
	5400	7	5387	85,7	250	300	350	130	170	6	241	180	405	4064

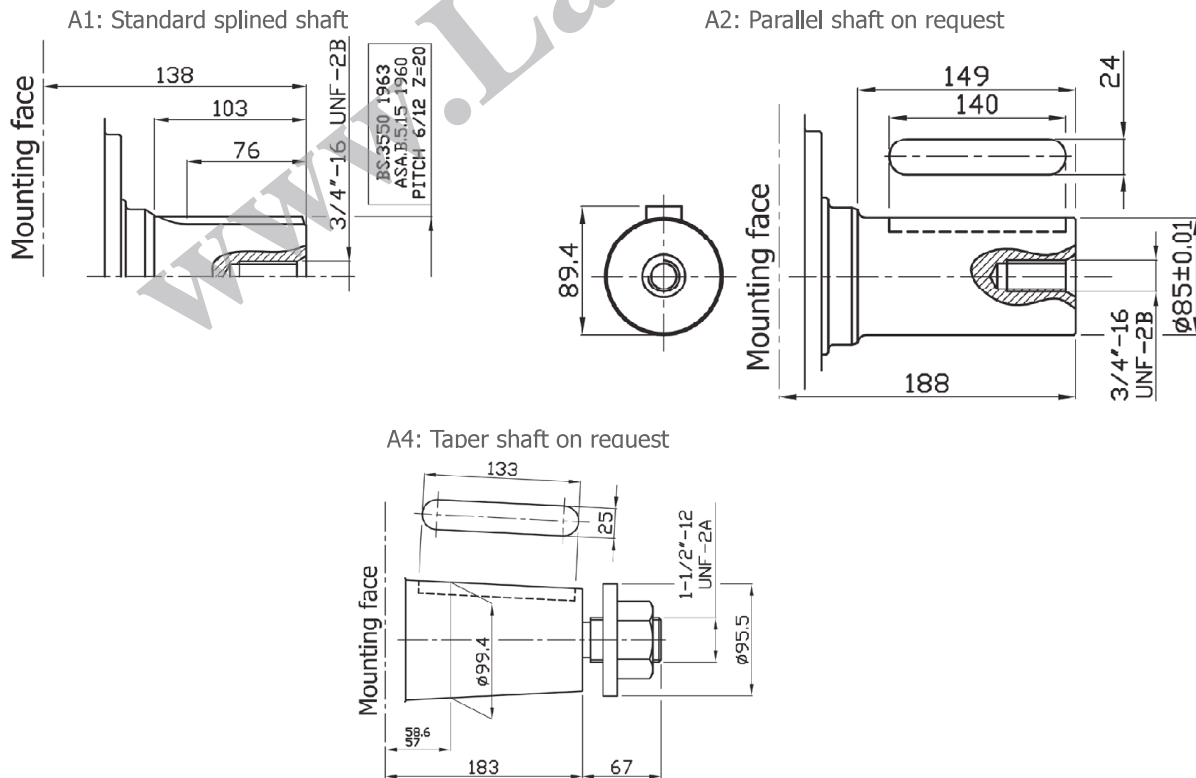
www.Laheghi.com

IAM H7 - DIMENSIONAL DRAWINGS

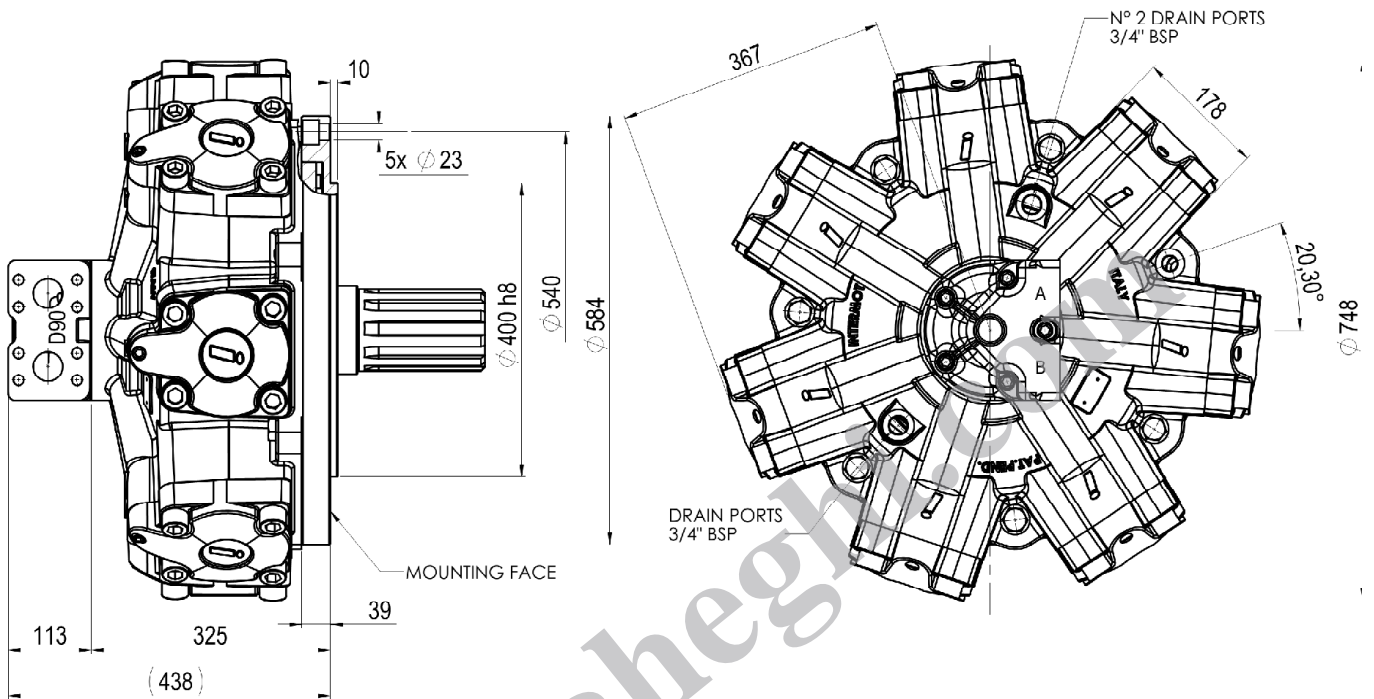
IAM 3900 – 4300 – 4600 – 5000 – 5400 H7



SHAFT OPTIONS

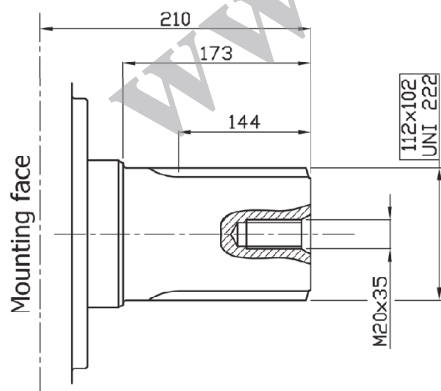


IAM 3900/C – 4300/C – 4600/C – 5000/C – 5400/C H7

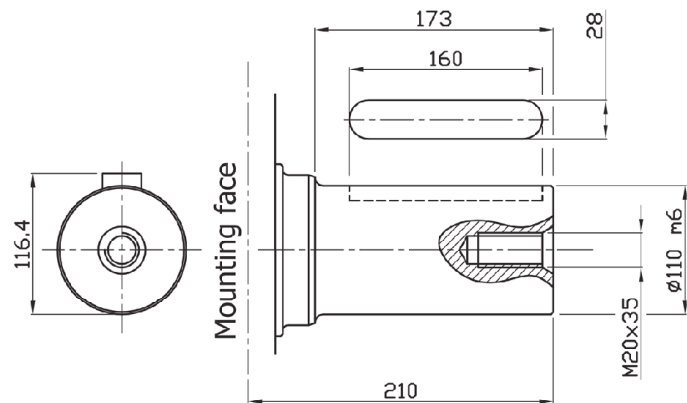


SHAFT OPTIONS

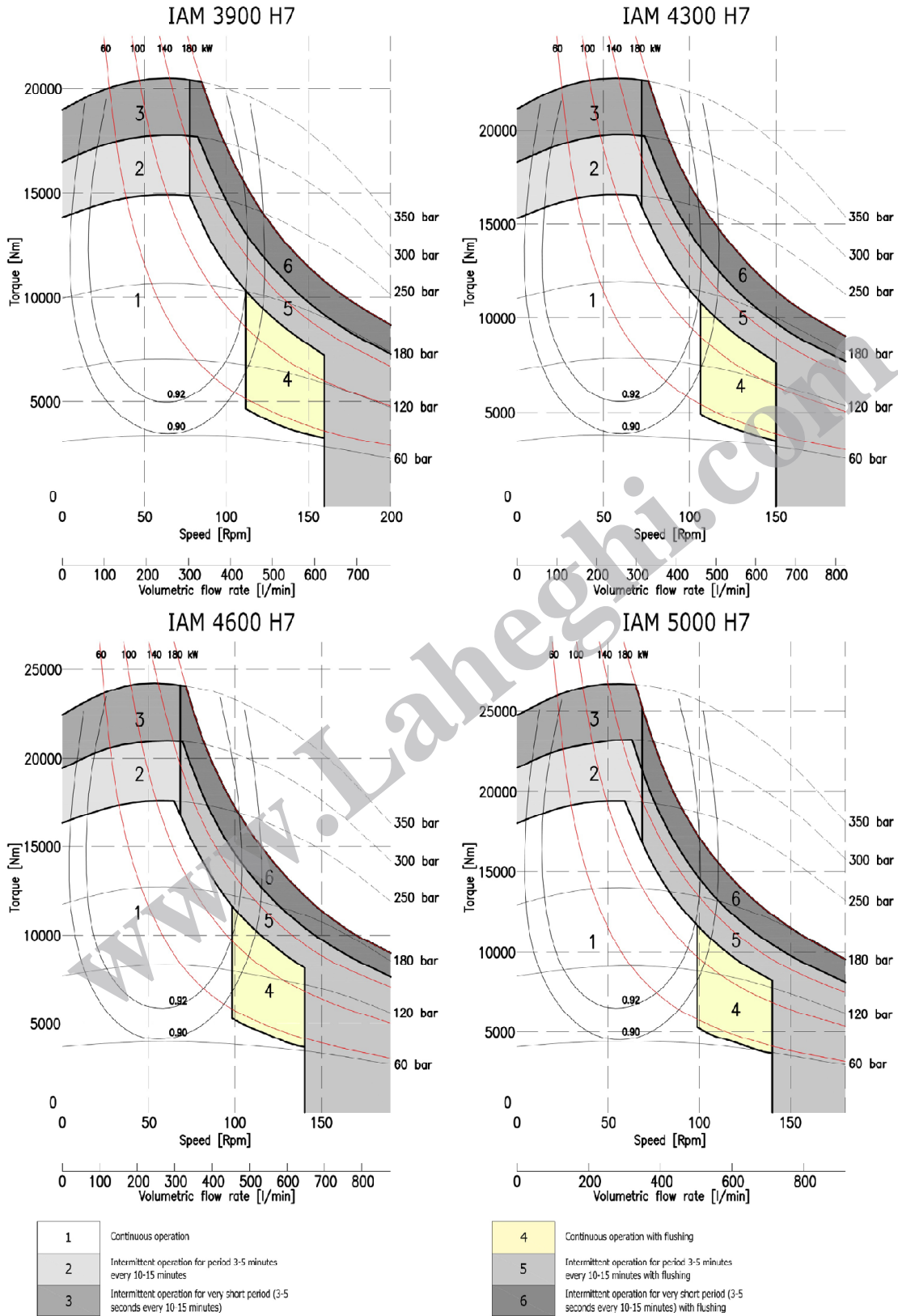
A0: Standard splined shaft

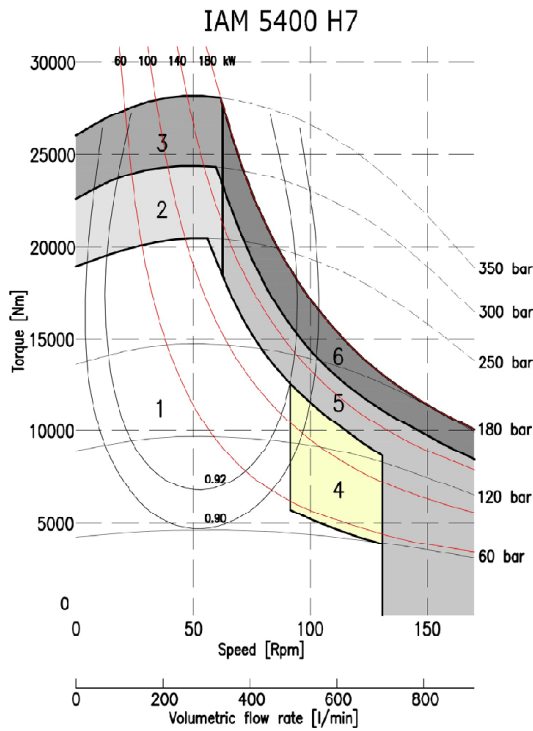


A2: Parallel shaft on request



IAM H7 - POWER CHARTS

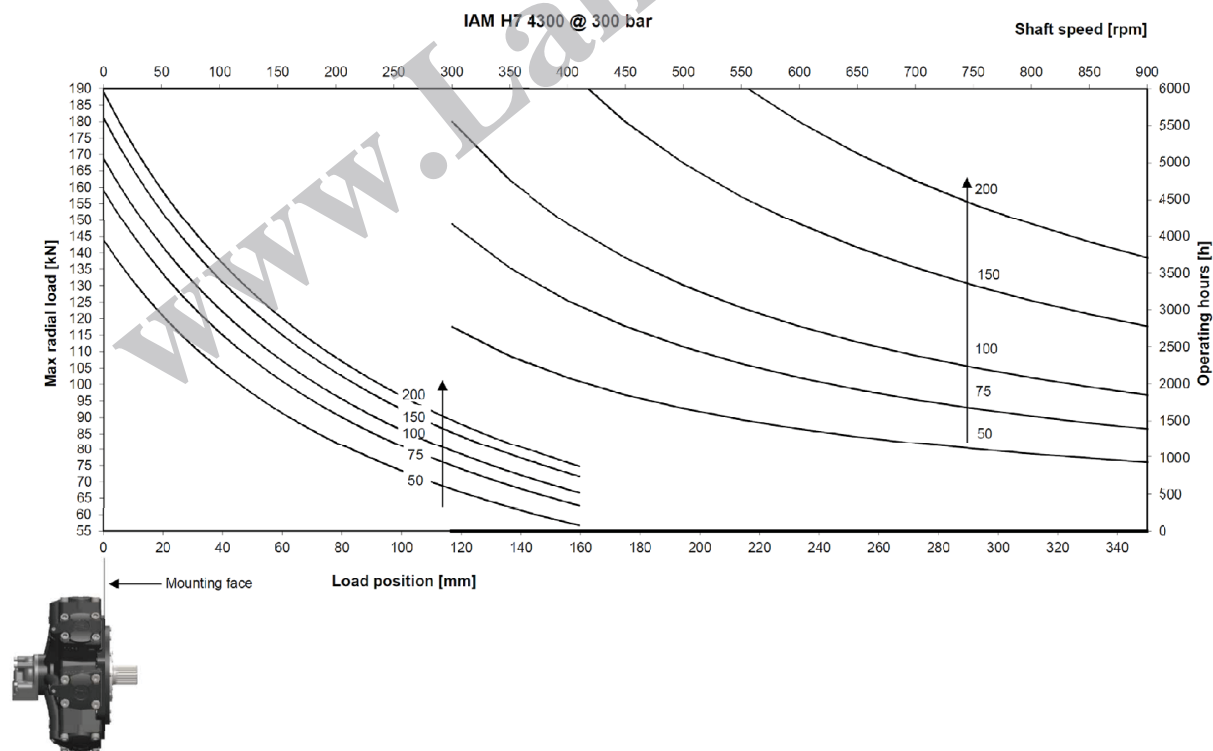
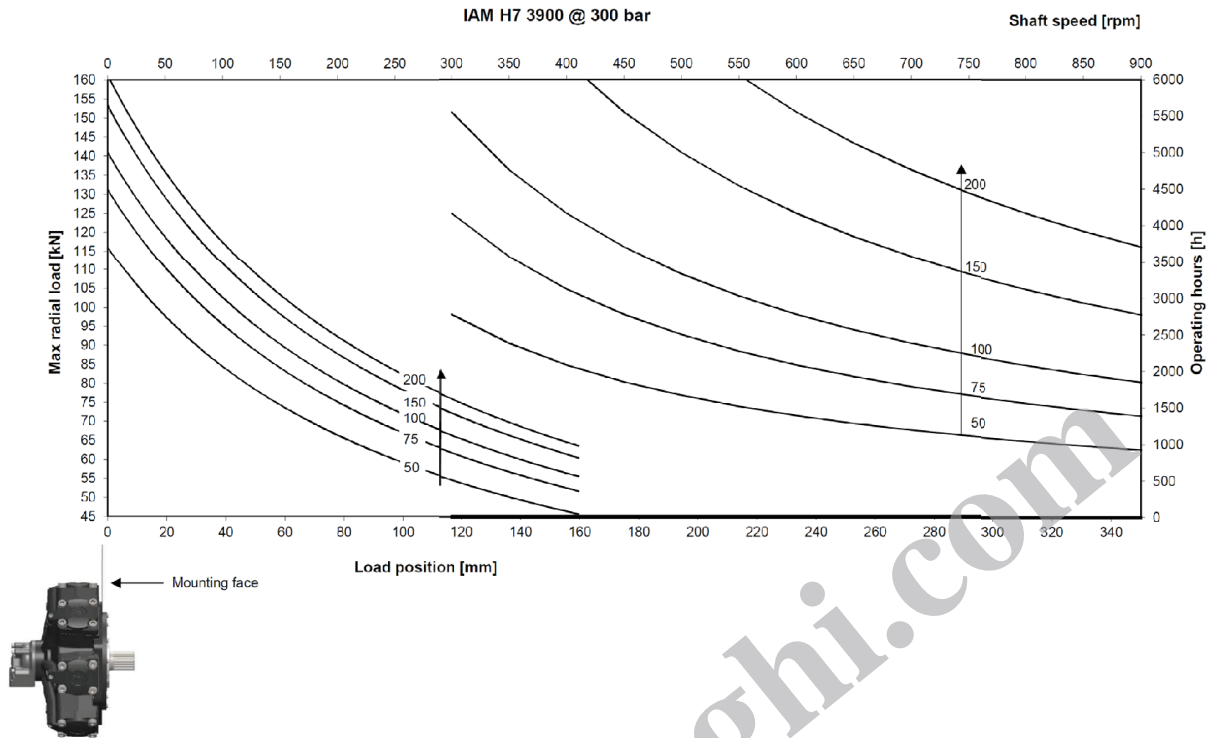


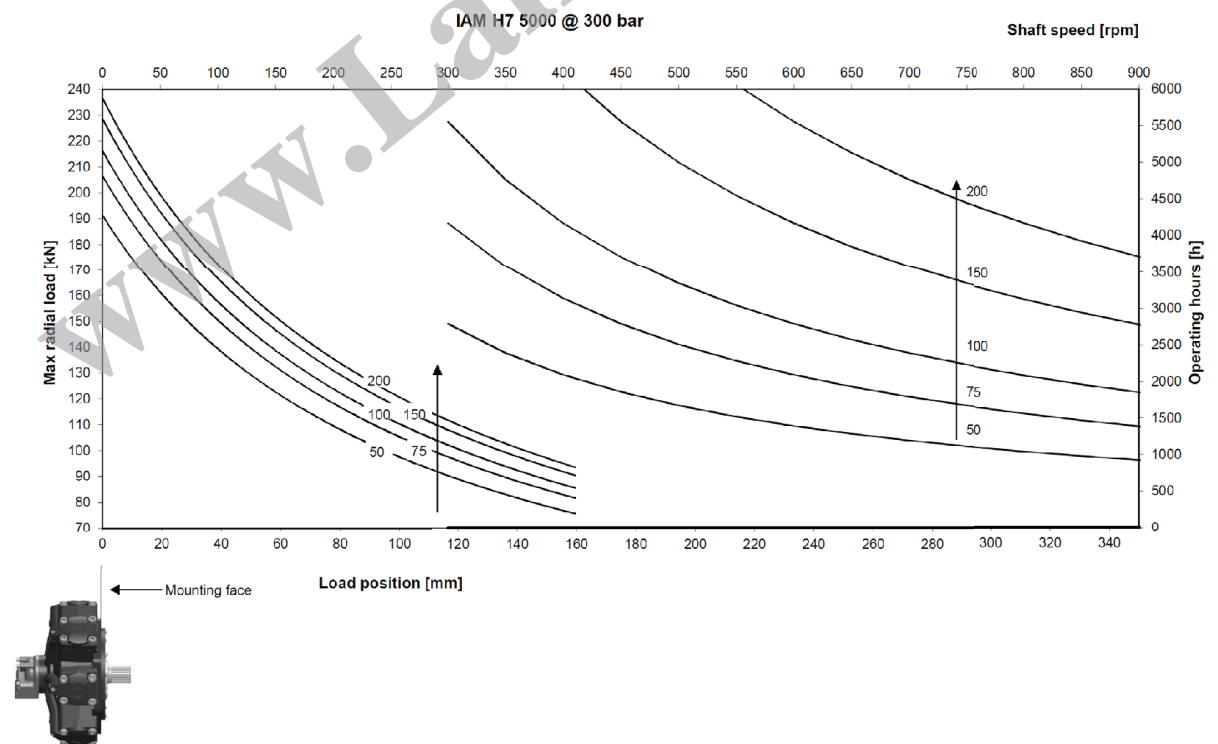
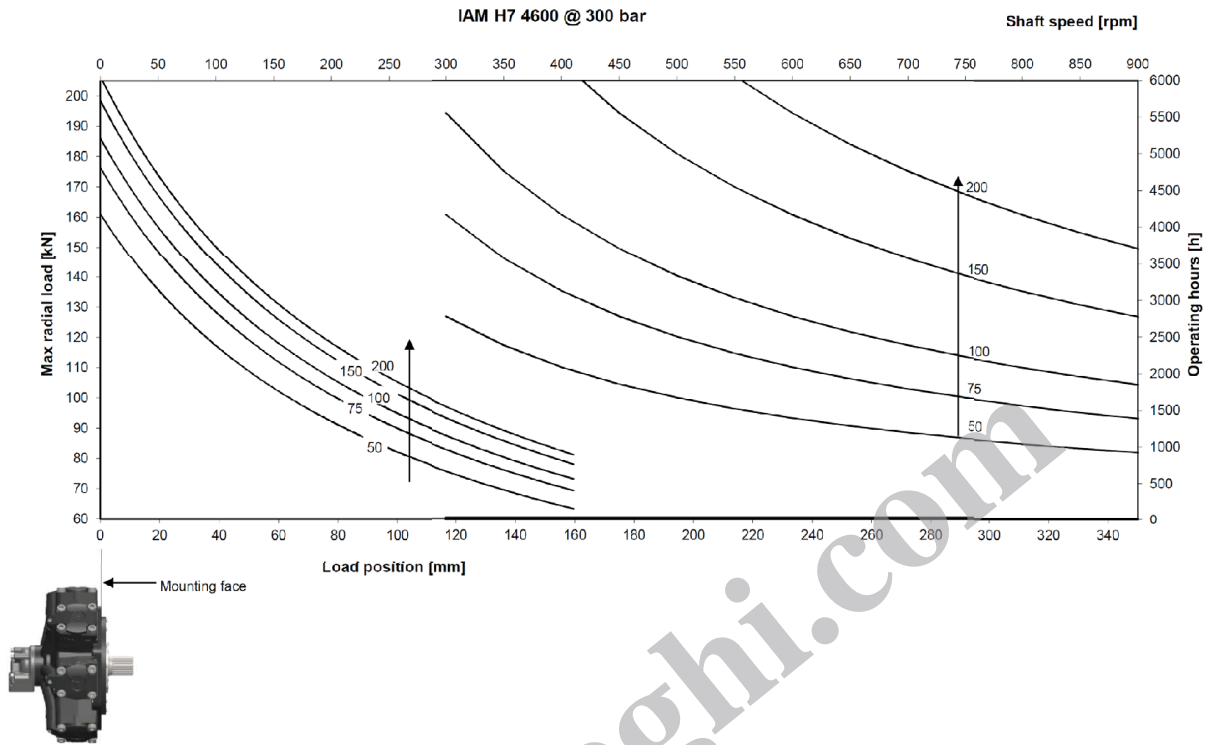


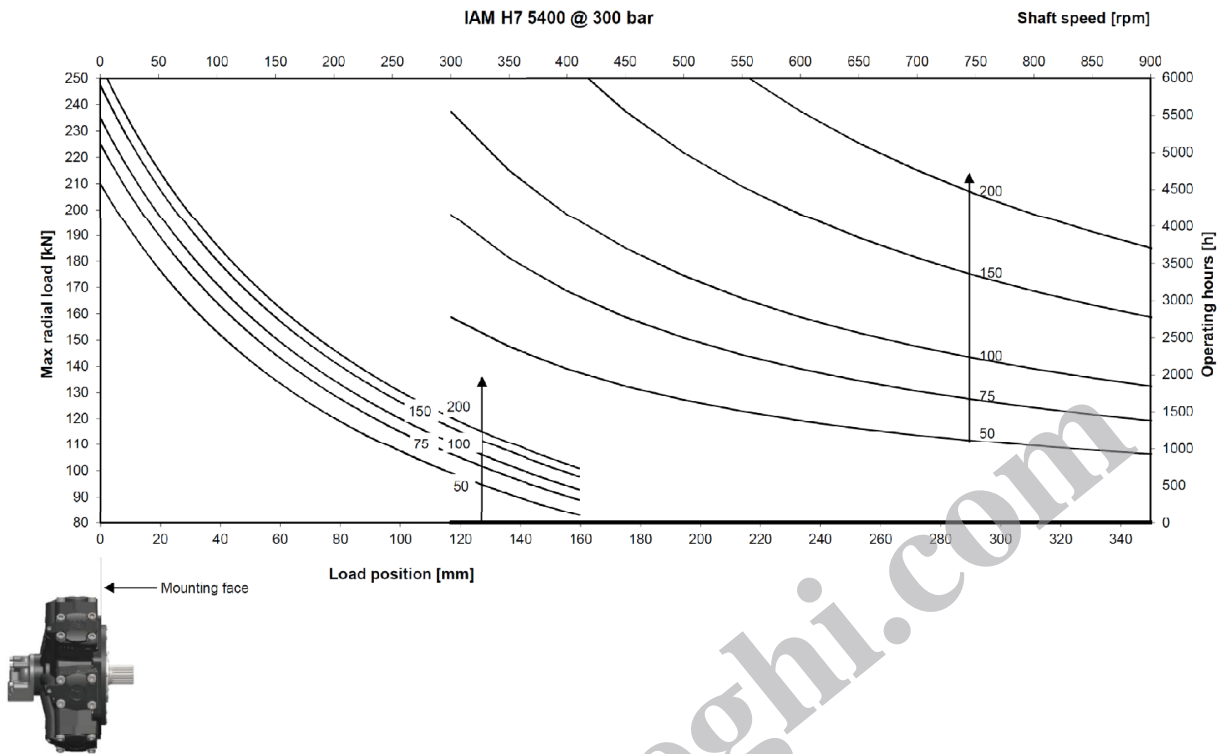
1	Continuous operation
2	Intermittent operation for period 3-5 minutes every 10-15 minutes
3	Intermittent operation for very short period (3-5 seconds every 10-15 minutes)

4	Continuous operation with flushing
5	Intermittent operation for period 3-5 minutes every 10-15 minutes with flushing
6	Intermittent operation for very short period (3-5 seconds every 10-15 minutes) with flushing

IAM H7 - SIDE LOAD CHARTS







IAM H7 - ORDERING INSTRUCTIONS

IAM	---	/-	H7	A_	D_--	---	SB_--
Model IAM							
Displacement 3900 cc/rev 4300 cc/rev 4600 cc/rev 5000 cc/rev 5400 cc/rev							
Interchangeability /C							
Housing H7							
Shaft A0 – Splined shaft A1 – Special splined shaft A2 – Parallel keyed shaft A4 – Tapered shaft							
Distributor D90 - SAE 1 1/2 " 6000 psi flange							
Tachometer K TA TB EST							
Spline billet SB10 – BS 3550 SB11 – 102 UNI 222							

EXAMPLE :

IAM 4300 H7 A1 D90

IAM 4600/C H7 A0 D90

www.Laheghi.com